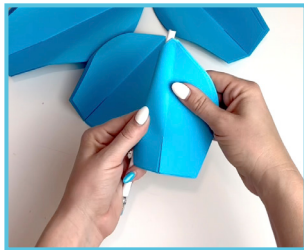


STEP 1: PREP THE PETALS.

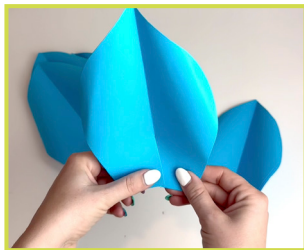
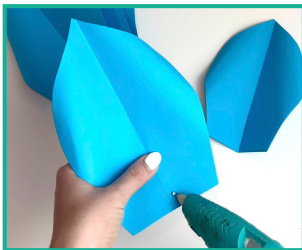
Fold the petals vertically and curl back their sides.

Using a pencil will make the process faster. Fold at least three petals at a time.



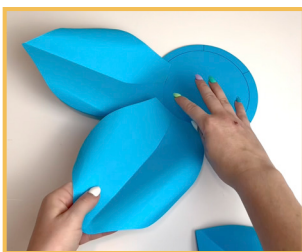
STEP 2: ADD DIMENSION TO THE PETALS.

The package includes glue dots in case a hot glue gun is not available, although hot glue has proven to be the most durable and long-lasting. At the bottom of each precut petal, place a provided glue dot or a dot of hot glue on one side of the cut. Slightly overlap the other side, holding it firmly in place to secure it. Repeat with each petal.



STEP 3: ASSEMBLE THE FLOWERS.

Use the guidelines on the circle. Place six petals down at a time, securing each with glue dots or a hot glue gun. Begin at the outside of the circle and work inward, starting with the largest petals on the outside and finishing with the smallest petals toward the center.



STEP 4: SECURE THE CENTER OF THE FLOWER.

Simply glue the precut pieces in the center. Bend the edges forward to create a 3D effect.

